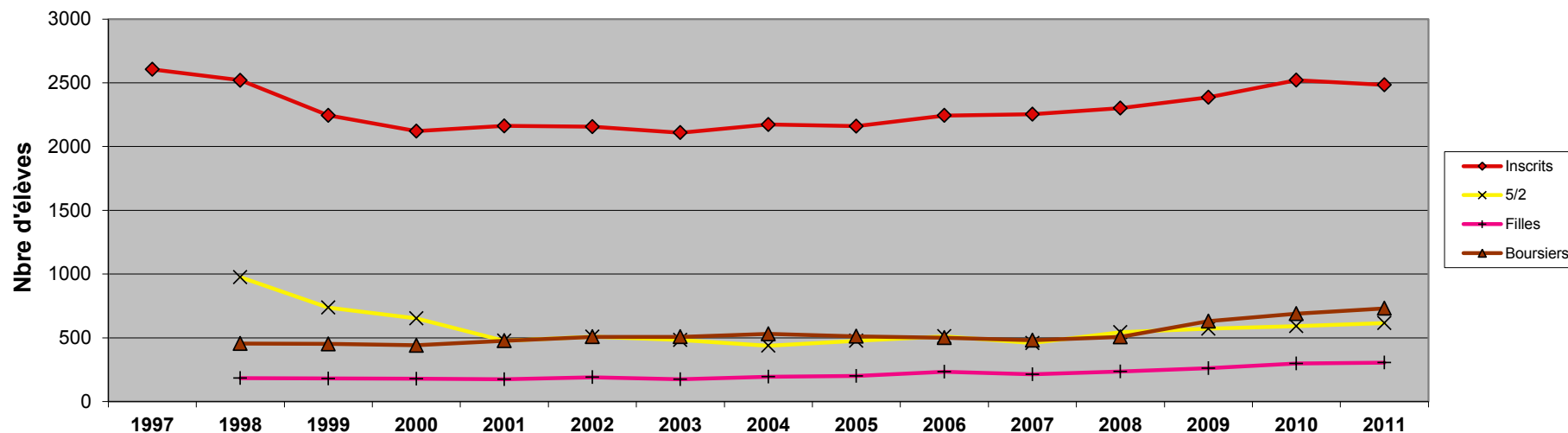


Répartitions 5/2, Filles, Boursiers



	1997	1998	1999	2000	2001	2002	2003	2004	2005	2006	2007	2008	2009	2010	2011
Inscrits validés	2605	2520	2245	2121	2162	2156	2109	2173	2160	2244	2253	2301	2387	2521	2484
5/2		976	737	653	477	509	483	438	477	512	459	543	571	592	615
% / inscrits		39%	33%	31%	22%	24%	23%	20%	22%	23%	20%	24%	24%	23%	25%
3/2		1544	1508	1468	1685	1647	1626	1735	1683	1732	1794	1758	1816	1929	1869
% / inscrits		61%	67%	69%	78%	76%	77%	80%	78%	77%	80%	76%	76%	77%	75%
Filles		183	181	179	175	191	174	194	201	233	213	236	261	298	305
% / inscrits		7%	8%	8%	8%	9%	8%	9%	9%	10%	9%	10%	11%	12%	12%
Garçons		2337	2064	1942	1987	1965	1935	1979	1959	2011	2040	2065	2126	2223	2179
% / inscrits		93%	92%	92%	92%	91%	92%	91%	91%	90%	91%	90%	89%	88%	88%
Boursiers		455	452	441	477	508	508	531	512	501	481	506	631	689	731
% / inscrits		18%	20%	21%	22%	24%	24%	24%	24%	22%	21%	22%	26%	27%	29%
Non Boursiers		2065	1793	1680	1685	1648	1601	1642	1648	1743	1772	1795	1756	1832	1753
% / inscrits		82%	80%	79%	78%	76%	76%	76%	76%	78%	79%	78%	74%	73%	71%