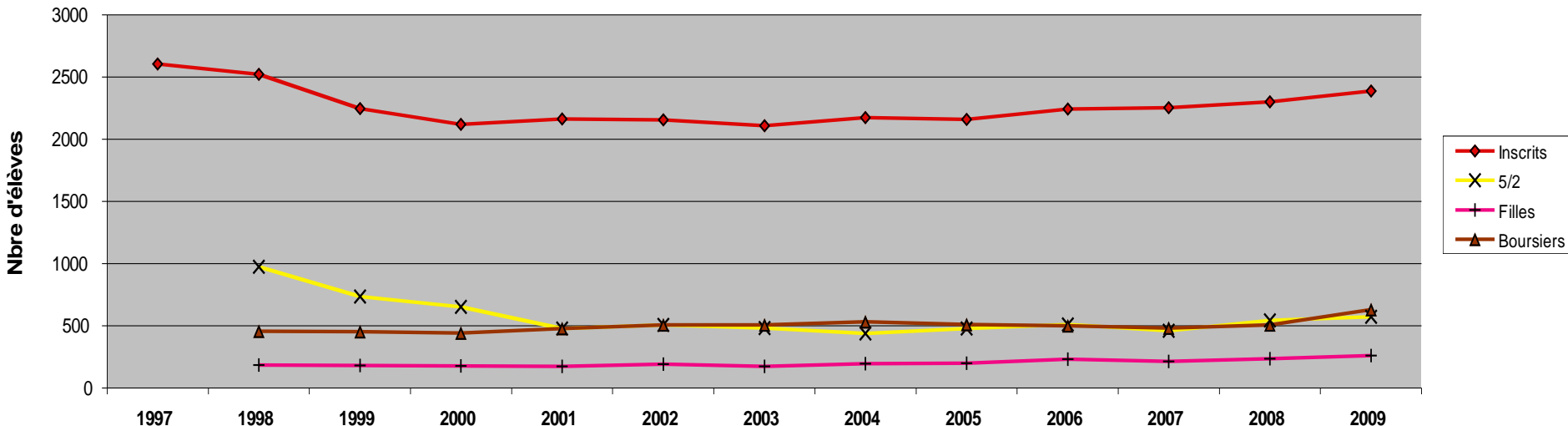


# Population des candidats « PT »

## Répartitions 5/2, Filles, Boursier



	1997	1998	1999	2000	2001	2002	2003	2004	2005	2006	2007	2008	2009
--	------	------	------	------	------	------	------	------	------	------	------	------	------

<b>Inscrits validés</b>	2605	2520	2245	2121	2162	2156	2109	2173	2160	2244	2253	2301	2387
-------------------------	------	------	------	------	------	------	------	------	------	------	------	------	------

<b>5/2</b>		976	737	653	477	509	483	438	477	512	459	543	571
% / inscrits		39%	33%	31%	22%	24%	23%	20%	22%	23%	20%	24%	24%

<b>3/2</b>		1544	1508	1468	1685	1647	1626	1735	1683	1732	1794	1758	1816
% / inscrits		61%	67%	69%	78%	76%	77%	80%	78%	77%	80%	76%	76%

<b>Filles</b>		183	181	179	175	191	174	194	201	233	213	236	261
% / inscrits		7%	8%	8%	8%	9%	8%	9%	9%	10%	9%	10%	11%

<b>Garçons</b>		2337	2064	1942	1987	1965	1935	1979	1959	2011	2040	2065	2126
% / inscrits		93%	92%	92%	92%	91%	92%	91%	91%	90%	91%	90%	89%

<b>Boursiers</b>		455	452	441	477	508	508	531	512	501	481	506	631
% / inscrits		18%	20%	21%	22%	24%	24%	24%	24%	22%	21%	22%	26%

<b>Non Boursiers</b>		2065	1793	1680	1685	1648	1601	1642	1648	1743	1772	1795	1756
% / inscrits		82%	80%	79%	78%	76%	76%	76%	76%	78%	79%	78%	74%